

Scratch-Off World Map Content



1 pcs - Map and Holding Tube



3 pcs - Stickers



1 pcs - Scratching Pick



1 pcs - Eraser



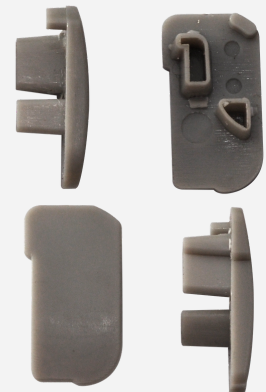
4 pcs - Aluminum Hangers



2 pcs - Hooks

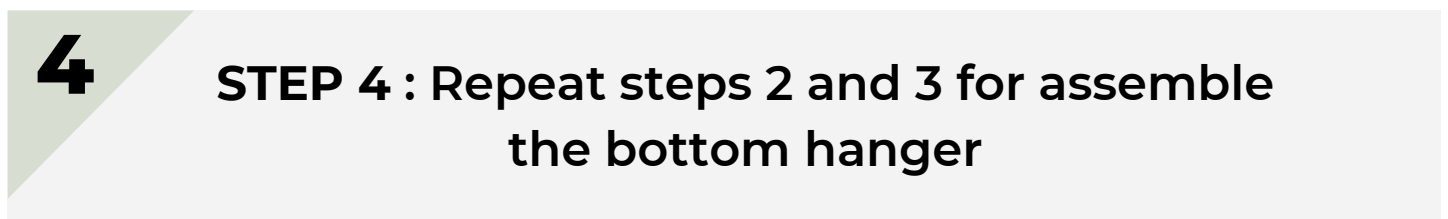
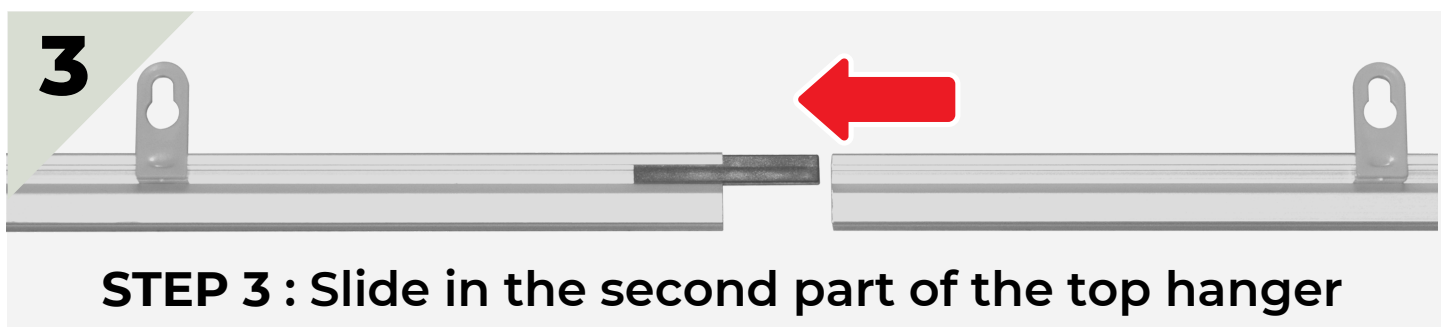
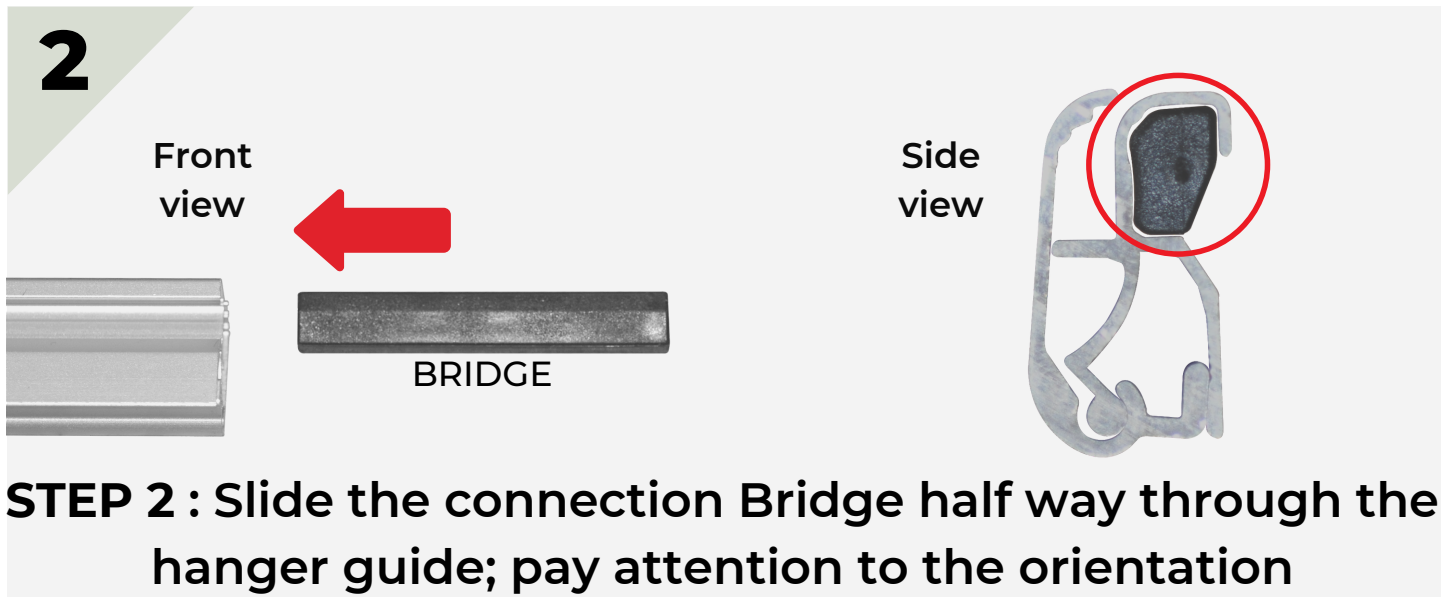
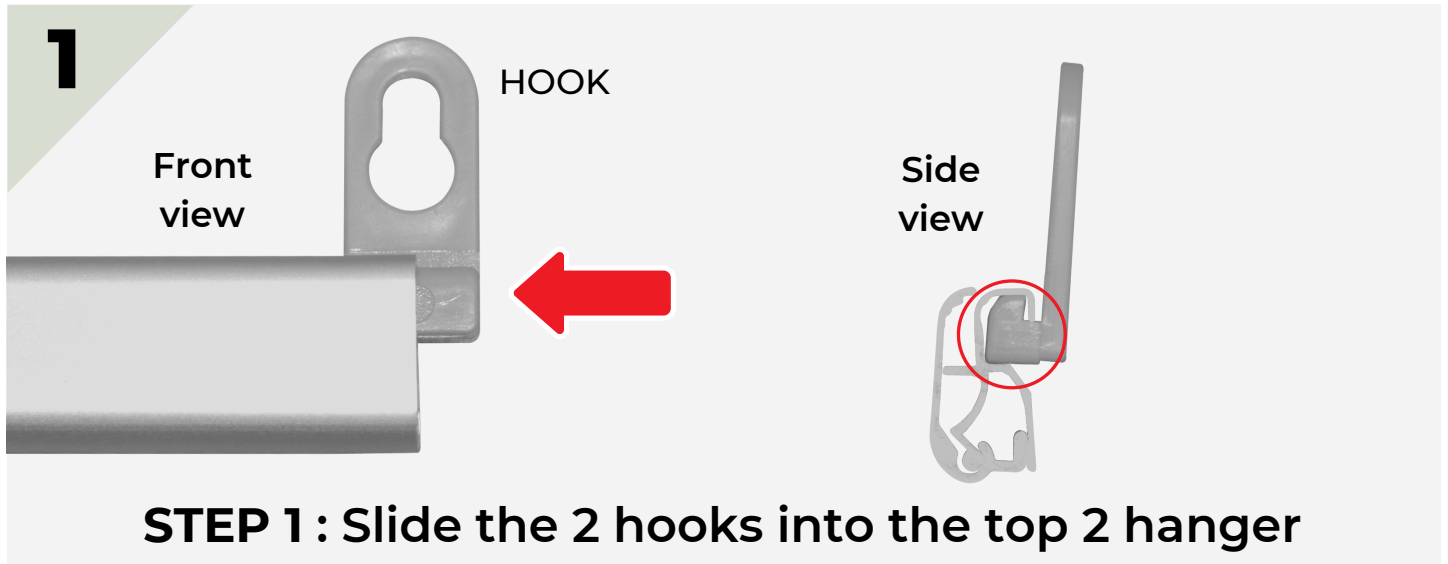


2 pcs - Connection Bridge



4 pcs - Terminal Cap

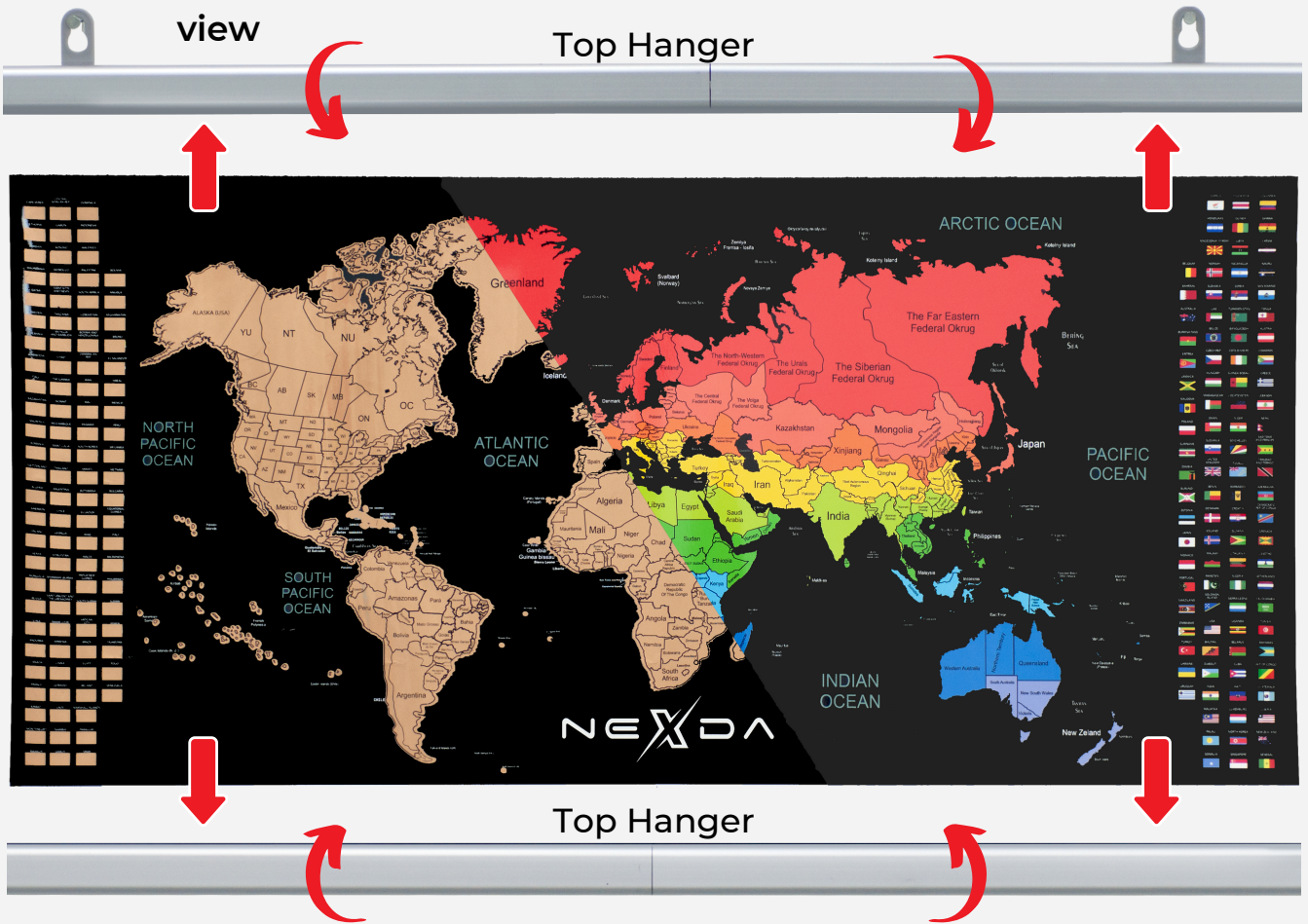
How to Assemble Your Hangers



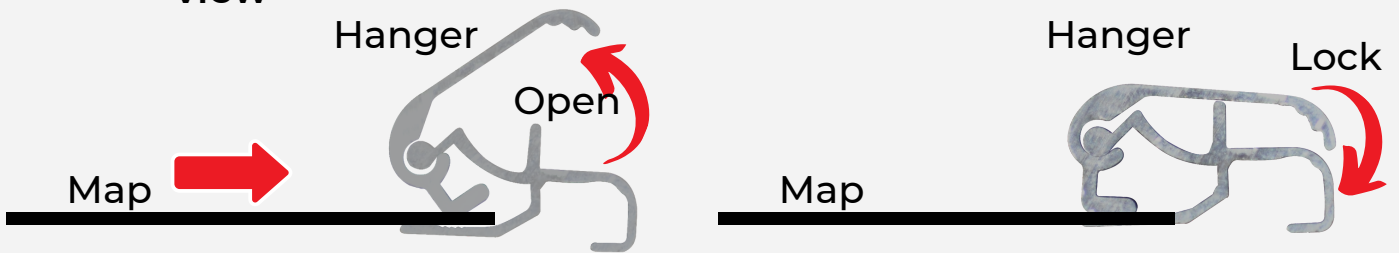
5

STEP 5 : Lift both Hangers rail and slide the Map into place and lock it down

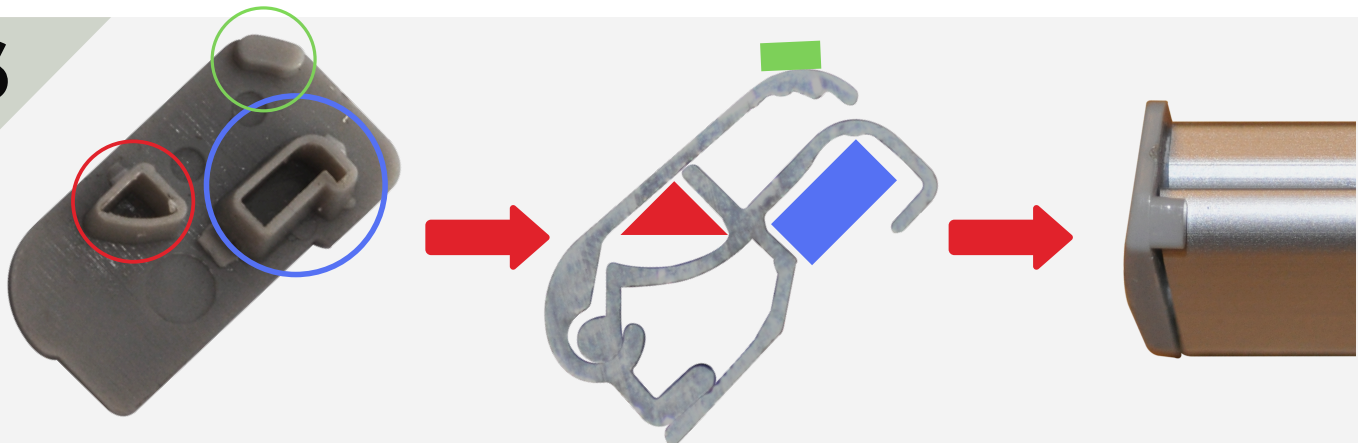
Front view



Side view



6



**STEP 6 : Press in the 4 Hangers terminals
Pay attention at the correct orientation**

How To Properly Use Your Map



STEP 1: Scratch the Golden foil with the pick.

a - Place the pick at 45 degrees to the map

b - Apply pressure while pulling towards you

DO NOT apply pressure while pushing the pick away from you otherwise the golden layer will leave indelible marks on the map



STEP 2: Use the rubber to remove any streaks to show the brilliance of the colors

BONUS: Use the stickers to personalize your map